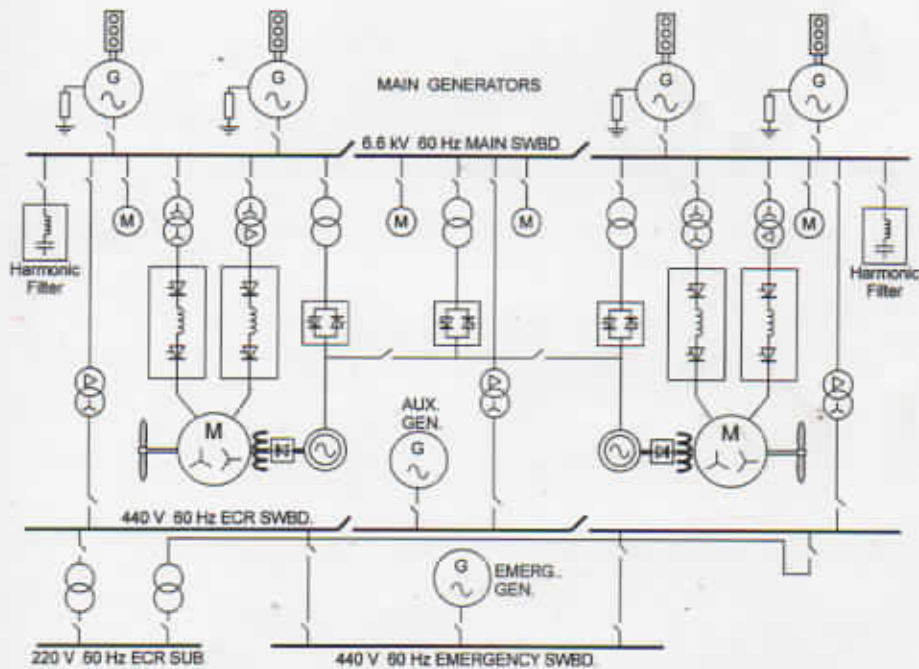


PRACTICAL MARINE ELECTRICAL KNOWLEDGE

Second Edition

Dennis T. Hall B.A. (Hons), C. Eng., M.I.E.E., M.I.Mar.E





PRACTICAL MARINE ELECTRICAL KNOWLEDGE

Dennis T. Hall

BA (Hons), CEng MIEE, MIMarE

Contents

	<i>Page</i>
Chapter One	1
Ships' Electrical Systems, Safety and Maintenance	
Introduction – Ships' Electrical System – Circuit Calculations – Electrical Diagrams – Electrical Safety – Electric Shock – Insulation Resistance – Circuit Testing – Insulation Testing – Continuity Testing – Multimeters – Diode Tests – Current Clampmeters – Live-line Testers – General Electrical Maintenance – Fault Finding.	
Chapter Two	25
Electrical Distribution	
Introduction – Power Distribution System – Insulated and Earthed Neutral Systems – Significance of Earth Faults – Distribution Circuit Breakers – Transformers – Instrument Transformers – Shore Supply Connection – Circuit Protection – Electric Cables.	
Chapter Three	57
Generators and Main Circuit Breakers	
Introduction – AC Generator Operation – Generator Construction and Cooling – Excitation Methods – Automatic Voltage Regulation – Generators in Parallel – Emergency Generators – Generator Protection – Generator Maintenance – Main Switchboard – Main Circuit Breakers.	
Chapter Four	85
Motors and Starters	
Introduction – Motor Construction – Enclosures and Ratings – Induction Motor Operation – Control Equipment – Direct on-Line Starting – Reduced Voltage Starting – Speed Control – Motor Protection – Single Phase Motors – Maintenance.	
Chapter Five	119
Ancillary Electrical Services	
Introduction – Ships' Lighting – Incandescent Lamps – Discharge Lamps – Voltage Effects on Lighting – Navigation and Signal Lights – Emergency Lighting – Maintenance of Lighting Fittings – Refrigeration and Air Conditioning – Galley and Laundry – Cathodic Protection – Battery Supplies.	
Chapter Six	149
Special Electrical Practice for Oil, Gas and Chemical Tankers	
Introduction – Tanker Classification – Hazardous Zones – Electrical Ignition of Gas – Apparatus Gas Groups – Temperature Class – Types of Explosion Protection – Exd Flameproof Enclosure – Exi Intrinsic Safety – Exe Increased Safety – Exn Non-Sparking – Exp Pressurised Enclosure – Exs Special Protection – Certification and Identification – Electrical Testing in Hazardous Areas – Maintenance of Ex-protected Apparatus.	

	<i>Page</i>
Chapter Seven Electrical Survey Requirements	167
Introduction – SOLAS – Classification Societies – Main Electrical Survey Items – Generators and Governors – Circuit Breakers – Switchboards and Fittings – Cables – Insulation Resistance – Motors and Starters – Emergency Power and Associated Equipment – Parts of Steering Gear – Navigation Light Indicators – UMS Operation – Tankers.	
Chapter Eight Electric Propulsion and High Voltage Practice	183
Introduction – Electric Propulsion Scheme – Power Supply Network – Review of Motor Operation – Controlled Rectification and Inversion – Converter Types – Propulsion System Operation – Harmonics – Propulsion Auxiliaries and Protection – High Voltage on Ships – High Voltage Safety – High Voltage Equipment Testing.	
Index	221

Index

A

Air Conditioning 136
 Alarm Monitoring 179
 Alkaline Battery 146
 Apparatus Gas Groups 154
 Automatic Voltage Regulation (AVR) 68
 Autotransformer Starter 97
 Azipod Thruster 188

B

Battery Supplies and Maintenance 143, 176
 Battery Types and Charging 144
 Bearings 116
 Brushless Generator 63, 65
 Bus-bar Earthing 215

C

Cable Types and Testing 51
 Cables Survey 173
 Capacitor-start Motors 112
 Cathodic Protection 140
 Circuit Breakers Survey 171
 Circuit Breakers 80
 Circuit Calculations 3
 Circuit Diagrams 5
 Circuit Earthing 215
 Circuit Faults 30
 Circuit Protection 43
 Circuit Testing 12
 Classification Societies 168
 Commutator Motors 113
 Compound Excitation 66
 Condition Monitoring 21
 Continuity Testing 15
 Controlled Rectification and Inversion 194
 Converter Types 193, 196
 Current Clampmeter 18
 Current Injection Testing 49, 172, 211, 219
 Current Transformer (CT) 40, 173
 Cycloconverter 196, 200

D

Diode Tests 18
 Direct-on-Line (DOL) Starter 93
 Discharge Lamps 122
 Distribution Circuit Breakers 36
 Distribution System 25

E

Earth Fault Monitoring 33
 Earth Faults 31
 Earthed Neutral System 29
 Earthing Down 215
 Electric Cables 51

Electric Propulsion Auxiliaries 208
 Electric Propulsion Options 184
 Electric Propulsion System Operation 201
 Electric Shock 10, 213
 Electrical Diagrams 5
 Electrical Maintenance 20
 Electrical Permit to Work (EPTW) 214
 Electrical Safety 9, 213
 Electrical Survey 169
 Electrical Testing in Hazardous Areas 164
 EMC 207
 Emergency Generator 75, 179
 Emergency Lighting 130
 Emergency Power Survey 176, 179
 Emergency Supplies 28
 Ex Certification 163, 180
 Ex Temperature Class 155
 Explosion Protection Types 155

F

Fault Finding 22
 Fire Triangle 153
 Flameproof Enclosure Exd 156, 180
 Fluorescent Lighting 122
 Frequency Control 104, 193
 Fuse Protection 49

G

Galley Equipment 137
 Gas Groups 154
 Gas Ignition 153
 Generator Construction and Cooling 61
 Generator Excitation Methods 65
 Generator Maintenance 78
 Generator Operation 57
 Generator Protection 76
 Generators and Governors Survey 169
 Generators in Parallel 70

H

Harmonic Filter 207
 Harmonics 105, 194, 204
 Hazardous Area Testing 164
 Hazardous Zones 153
 HV Circuit Breakers 212
 HV Insulation 213
 HV on Ships 211
 HV Protection Scheme 43
 HV Safety 213
 HV Testing 216

I

IGBT 104, 198
 Impressed Current Cathodic Protection 142

I (contd.)

Incandescent Lamps 120
Increased Safety Exe 160
Induction Motor Operation 90
Infra Red Image Testing 116, 172, 217
Ingress Protection (IP Code) 88
Instrument Transformers 39
Insulated Neutral System 29
Insulation Class 12
Insulation Resistance (IR) Survey 174
Insulation Resistance 11
Insulation Testing 13
Interference (Noise) 207
Intrinsic Safety Exi 158, 181
Inversion 195

L

Lamp Types 120
Laundry Equipment 139
Lead-acid Battery 145
Live-Line Testers 19, 215
Load Sharing between Generators 74
Low Location Lighting (LLL) 131

M

Main Circuit Breakers 80, 171
Main Supply 26
Main Switchboard 79, 172
Maintenance of Ex Apparatus 164
Maintenance of Generators 78
Maintenance of Lighting Fittings 131
MCCBs and MCBs 36
Micro-ohmmeter 217
Motor and Starter Maintenance 114
Motor Braking 204
Motor Construction 86
Motor Enclosures and Ratings 87
Motor Operation 90, 191
Motor Protection 105, 210
Motor Speed Control 100, 193
Motor Starting 92, 193
Motors and Starters Survey 175
Multimeters 16

N

Navigation and Signal Lights 128
Navigation Lights Survey 178
Non-Sparking Exn 161

O

Overcurrent Protection (OCR) 46, 107, 210

P

P.I. (Polarisation Index) 217
Parallel Operation of Generators 70
Permit to Work 214
Planned Maintenance 20
Power Distribution System 25
Power Factor 59
Power Management System (PMS) 204
Power Supply for Electric Propulsion 189

Preference Tripping 28
Pressurised Enclosure Exp 161, 181
Propulsion Motor Types and Operation 191
Protection of Motors 105, 210
Protection of Generators 76
Protective Discrimination 45
Pulse-mode Operation 204
PWM Converter 198

R

Rectification 194
Reduced Voltage Starting 95
Refrigeration Equipment 132
Regenerative Braking 204
Reverse Power Protection 77

S

Safety 9, 213
Shaded-pole Motor 113
Shaft Generator Operation 60
Ship Electric Propulsion Scheme 184
Ships Electrical System 1
Ships Lighting 119
Shore Supply Connection 41
Simmerstat Control 138
Single Phase Motor Types 112
Single-phasing Protection 110
Smoke and Fire Detection 179
Sodium Vapour Lamps 126
Soft Starting of Motors 99
SOLAS Regulations 167
Special Protection Exs 162
Split-phase Motor 112
Star-Delta Starter 95
Steering Gear Survey 177
Superconductivity 189
Survey (Electrical) Items 169
Switchboards Survey 172
Synchroconverter 198
Synchronising of Generators 70
Synchronous Motor Operation 192, 201

T

Tanker Classification 150
Tanker Survey (Electrical) 180
Temperature Sensors 109
Testing in Hazardous Areas 164
THD 206
Three-heat Switching 137
Thyristor Cooling and Protection 209
Thyristor 104, 195
Transformers 37
Transistor 104, 198

U

UMS Operation Survey 179
Undervoltage Protection 50
UPS Systems 131, 147

V

Vacuum and SF6 Interrupters 80, 212

V contd.)

Vacuum Interrupter Testing 212
Variable Frequency Control 104, 193
Voltage Effects on Lighting 127
Voltage Regulation 68
Voltage Transformer (VT) 40
VSD (Motor Control) 104, 193, 198

W

Ward-Leonard Speed Control 102
Wiring Diagrams 7
Wound-rotor Motor Control 102

Z

Zener Barrier 158, 181